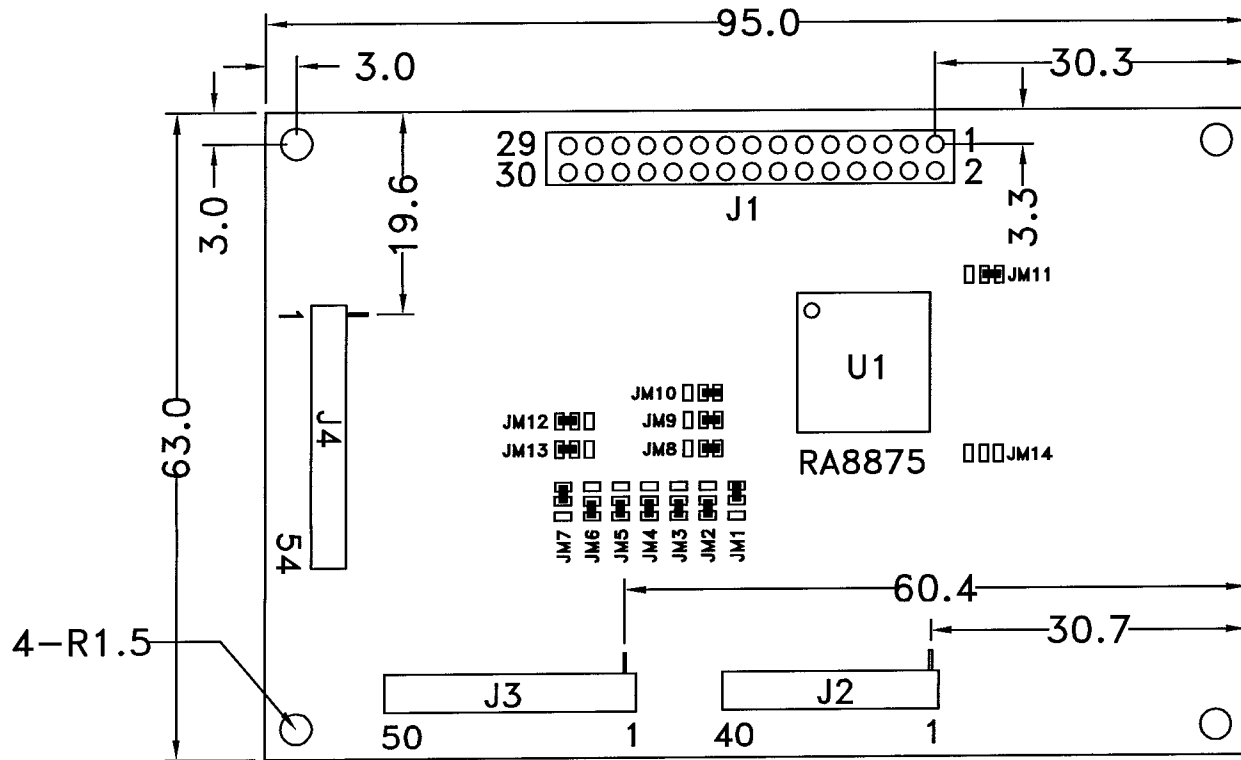
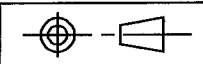


MARK	REASON	PREPARED	DATE
△			
△			
△			
△			



JM	DESCRIPTION	VDD	GND
1	LEFT/RIGHT SELECTION	H	L (J3=5" TFT)
2	UP/DOWN SELECTION		L
3	DITHERING FUNCTION		L
4	CONTROL THE INPUT DATA FORMAT		L
5	CONTROL THE INPUT DATA FORMAT		L
6	CONTROL THE INPUT DATA FORMAT		L
7	DE/SYNC MODE SELECT	H	
8	SPI SELECT		L
9	SPI SELECT		L
10	PARALLEL/SERIAL/IIC INPUT SIGNAL SELECT		L
11	MCU 8080/6800 INTERFACE SELECT		L
12	IIC POSITION SELECT	H	
13	IIC POSITION SELECT	H	
14	DATA INPUT ENABLE		NC

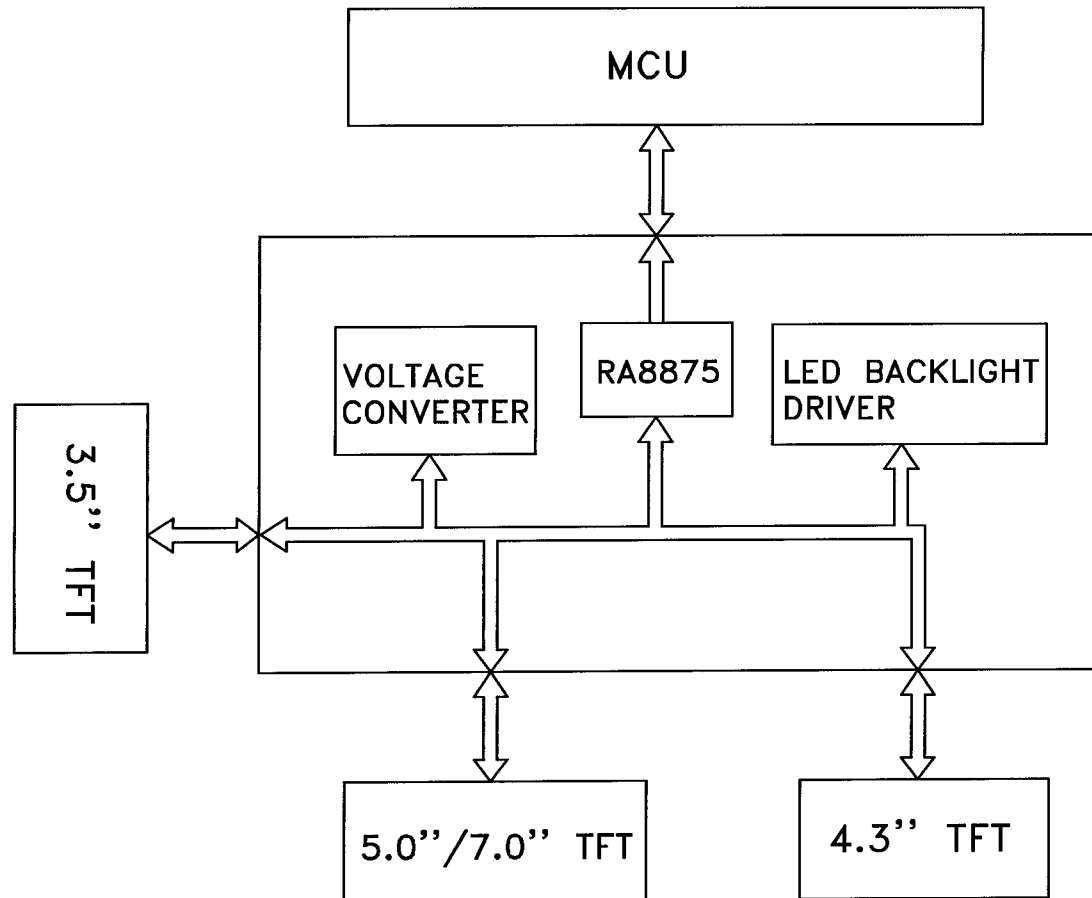
REMARK:
 J1 MCU INTERFACE
 J2 4.3" TFT PORT
 J3 5.0"/7.0" TFT PORT
 J4 3.5" TFT PORT



TOLERANCE IF NOT SPECIFY ±0.5mm		SCALE N.T.S.	UNIT IN mm	CLOVER DISPLAY LTD. (HK)		SHEET 1 OF 2	
REV. 00	REVISION RECORD 1st ISSUE		DATE 06 MAY 15	CUSTOMER STANDARD		APPROVED	MODEL NO. K358
				AGENT		APPROVED	TITLE: MODULE DIMENSION
				CUSTOMER REF.		OUR REF.	DRAWN BY: HCC DATE: 06 MAY 15
							CHECKED BY: <i>Jackson</i> DATE: 19-10-15
							APPROVED BY: <i>[Signature]</i> DATE: 19/10/15

(1) J1 PINOUT

PIN NO.	SYMBOL	PIN NO.	SYMBOL
1	GND	16	DB6
2	SCS	17	DB7
3	SDI	18	DB8
4	SDO	19	DB9
5	EN	20	DB10
6	SCL	21	DB11
7	RW	22	DB12
8	CS	23	DB13
9	RS	24	DB14
10	DB0	25	DB15
11	DB1	26	WAIT
12	DB2	27	INT
13	DB3	28	RST
14	DB4	29	VDD
15	DB5	30	GND



(2) FEATURES

OPERATION VOLTAGE : 3.0~3.6V
 COLOR DEPTH TFT : 256/65K COLORS
 STORAGE TEMPERATURE : -30°C ~ +85°C
 OPERATION TEMPERATURE : -30°C ~ +85°C
 SUPPORTING MCU INTERFACE :
 *8080/6800 WITH 8/16 DATA BUS WIDTH
 *I2C OR 3/4-WIRE SPI
 BUILT-IN 4 WIRE RESISTIVE TOUCH PANEL DRIVER
 BUILT-IN PWM FOR BACKLIGHT CONTROL

TOLERANCE IF NOT SPECIFY ±0.5mm		SCALE N.T.S.	UNIT IN mm	CLOVER DISPLAY LTD. (HK)		SHEET 2 OF 2	
REV.	REVISION RECORD		DATE	CUSTOMER	APPROVED	MODEL NO. K358	
00	1st ISSUE		06 MAY 15	STANDARD		TITLE: BLOCK DIAGRAM	
				AGENT	APPROVED	DRAWN BY: HCC DATE: 06 MAY 15	
						CHECKED BY: <i>Jade</i> DATE: 19-10-15	
				CUSTOMER REF.	OUR REF.	APPROVED BY: <i>[Signature]</i> DATE: 19-10-15	